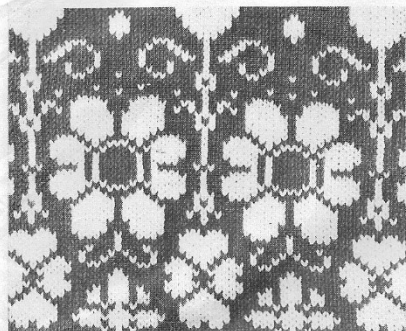


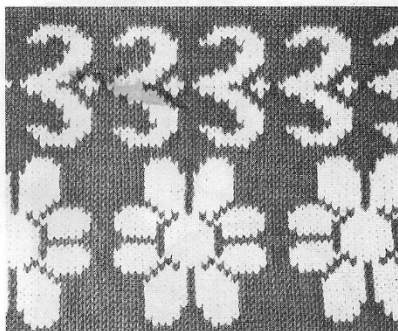
**HANDY PUNCH®
PATTERN SET M1009**

THESE PATTERNS ARE SUITABLE
FOR USE WITH KNITMASTER MACHINES
MODELS 313, 321, 323, 325.

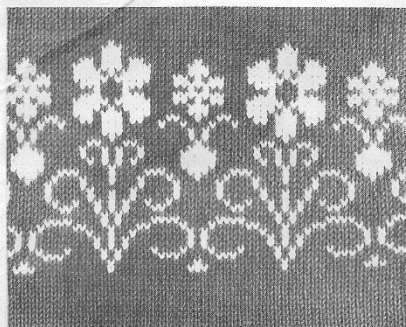
Empisal
Knitmaster



M161



M162



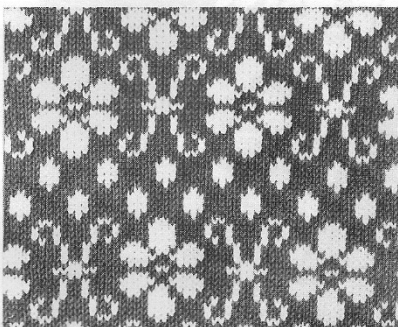
M163



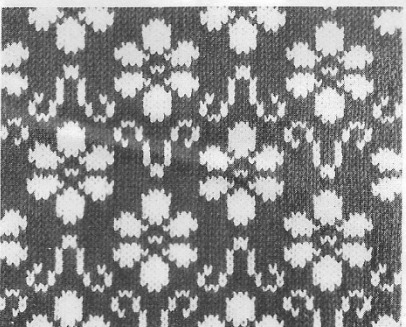
M164



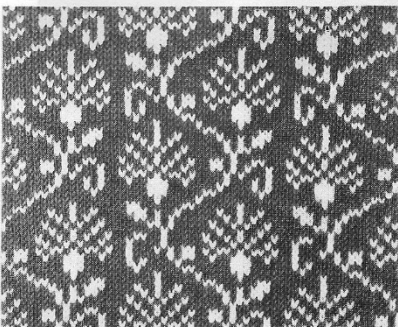
M165



M166



M167



M168



M169

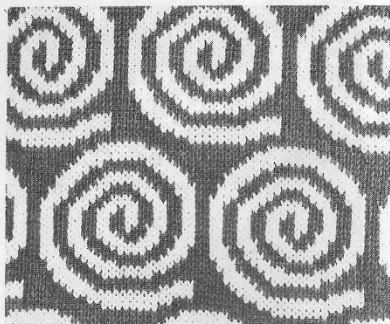


M170

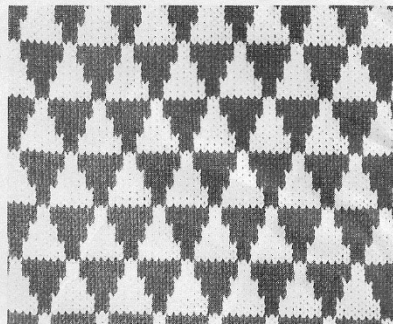
**HANDY PUNCH®
PATTERN SET M1009**

THESE PATTERNS ARE SUITABLE
FOR USE WITH KNITMASTER MACHINES
MODELS 313, 321, 323, 325.

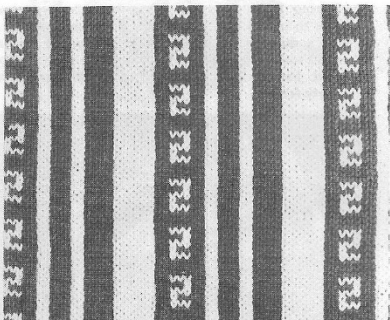
Empisal
Knitmaster



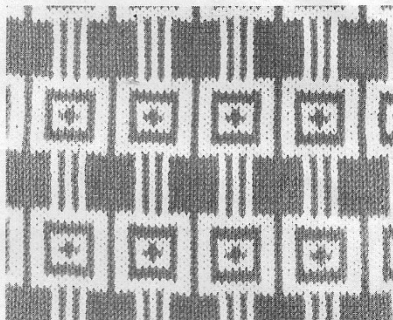
M171



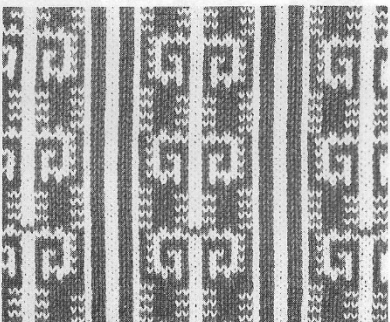
M172



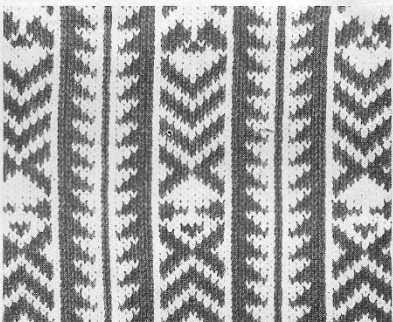
M173



M174



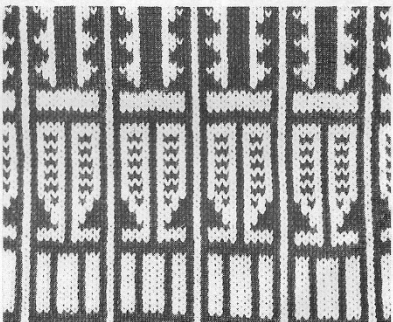
M175



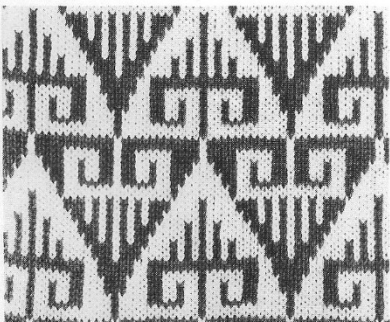
M176



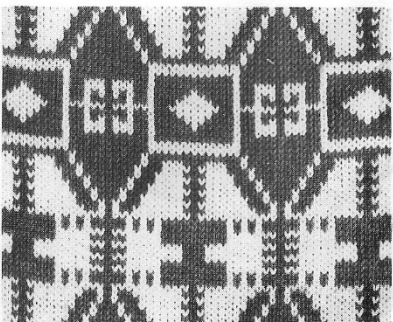
M177



M178



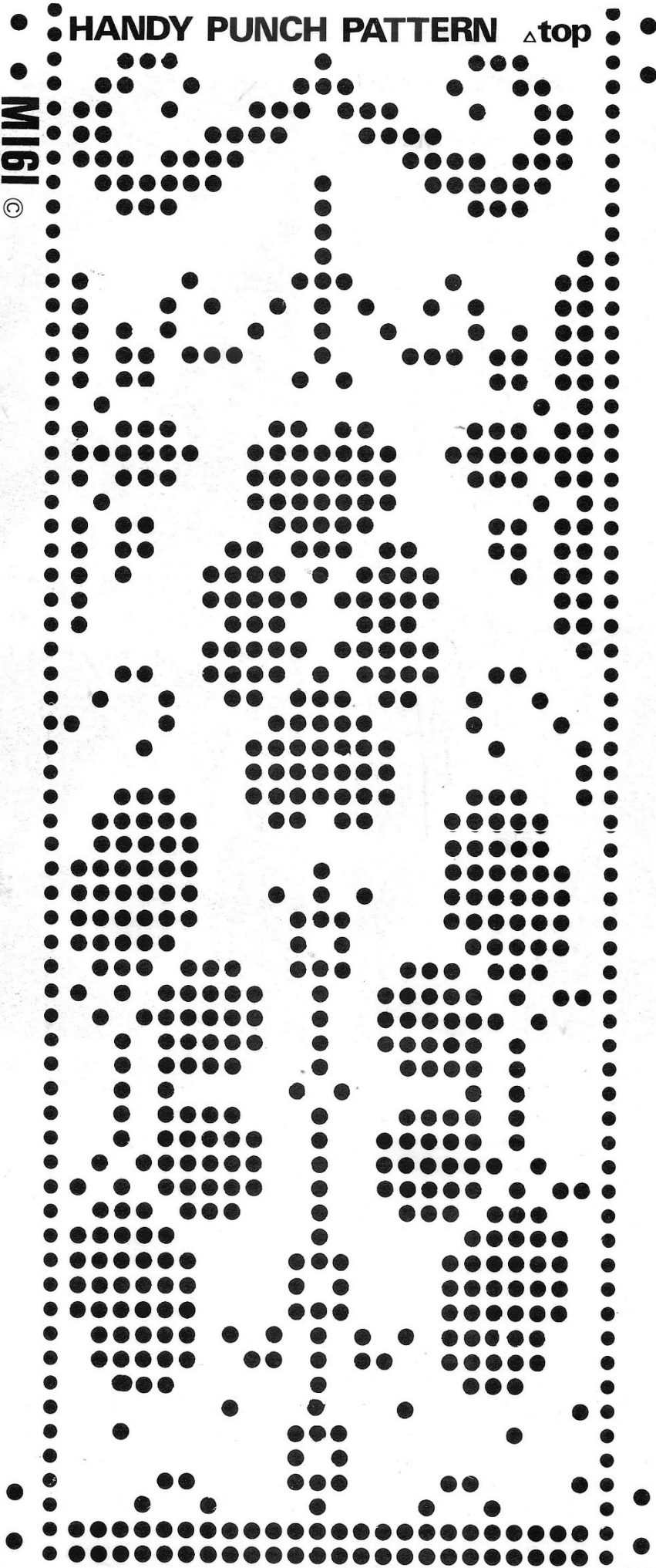
M179



M180

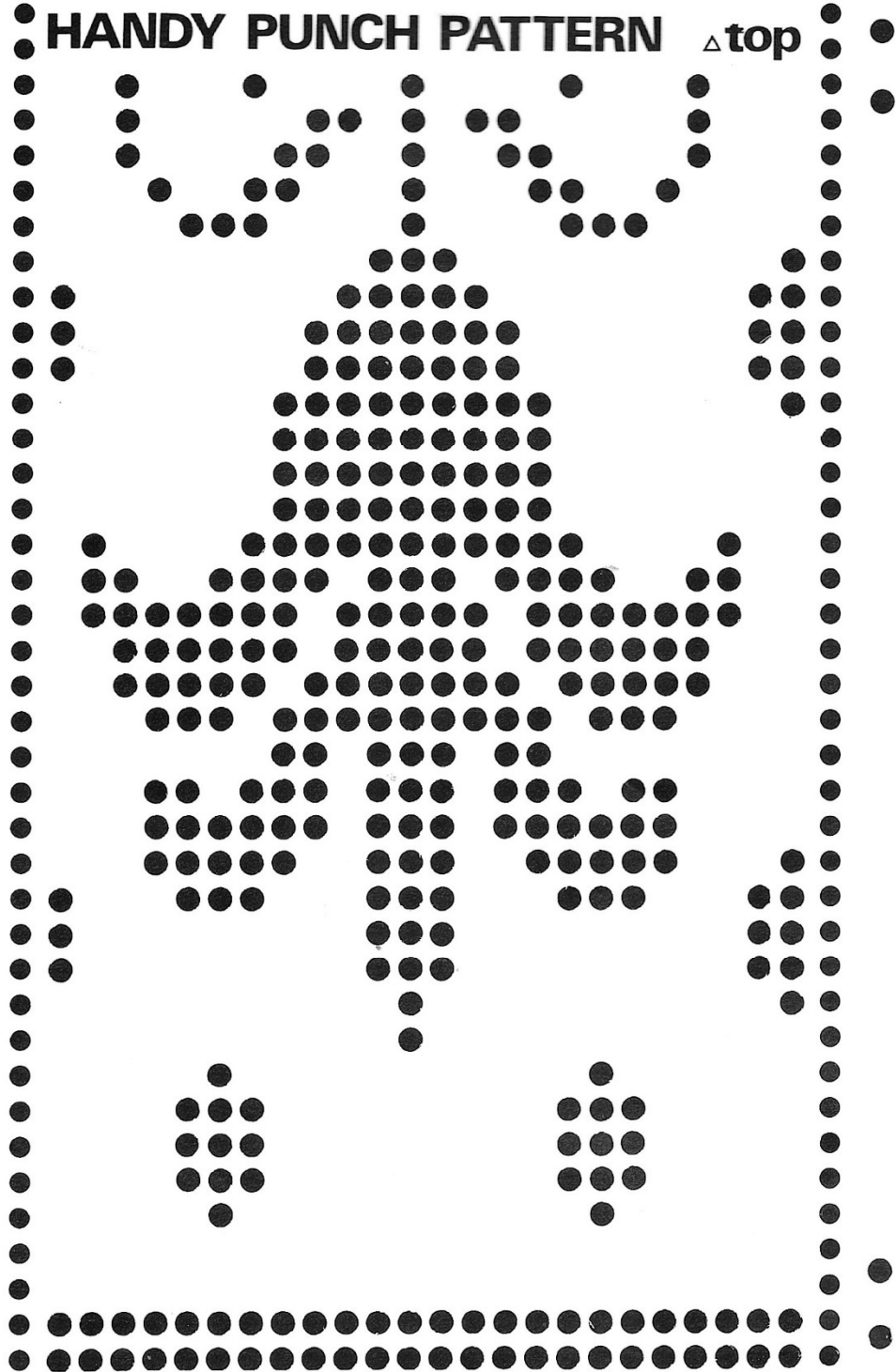
HANDY PUNCH PATTERN Δ top

MIGI
©



HANDY PUNCH PATTERN Δ top

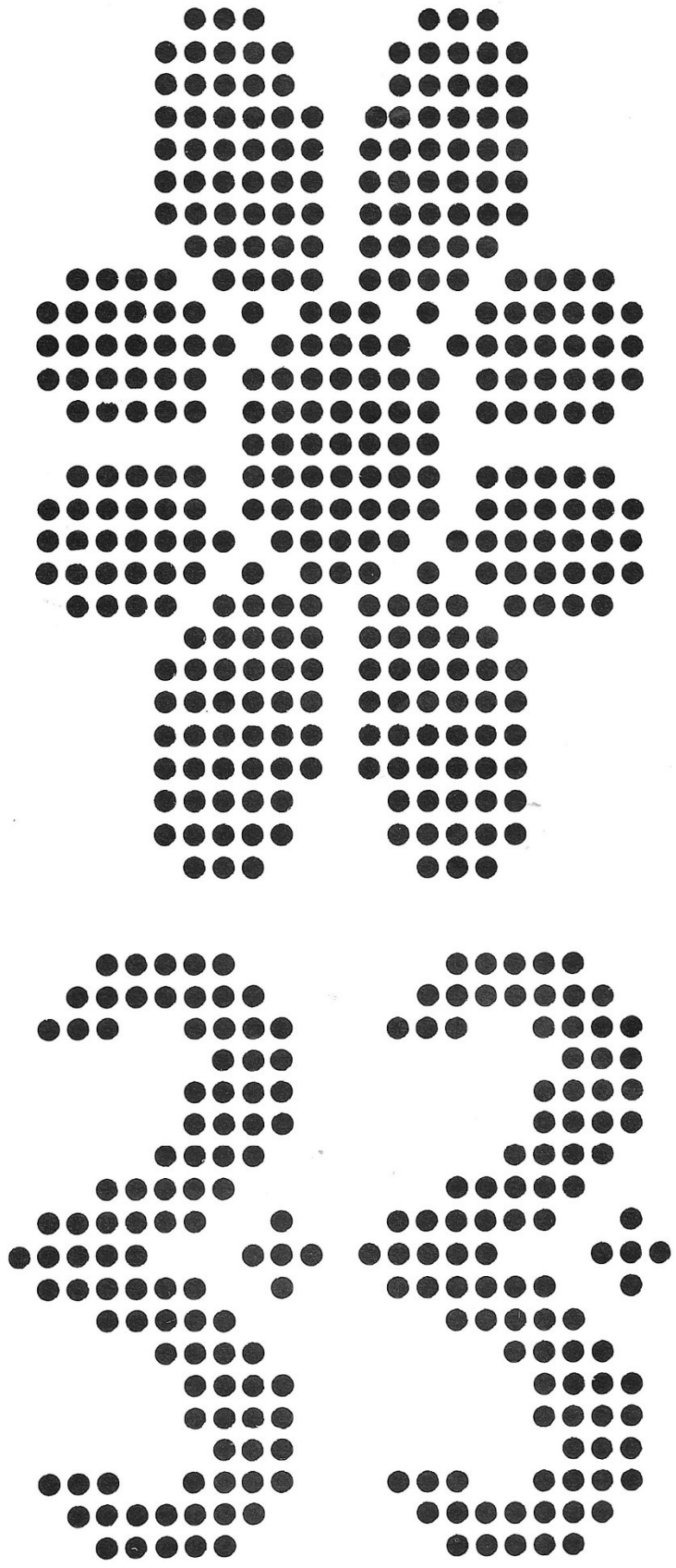
JOIN TO M161 >



CUT HERE

MIGZ ©

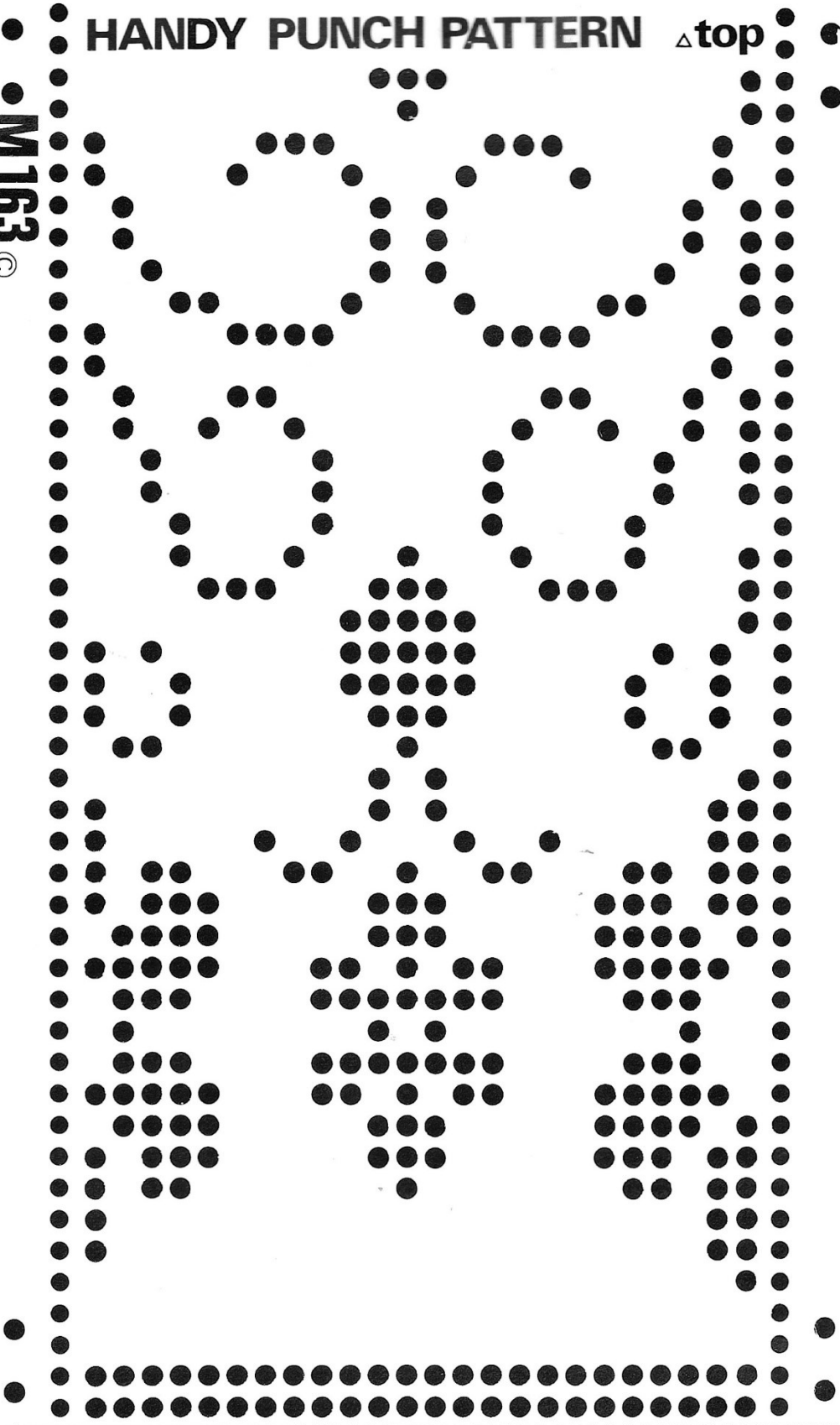
HANDY PUNCH PATTERN Δ top



CUT HERE

HANDY PUNCH PATTERN Δ top

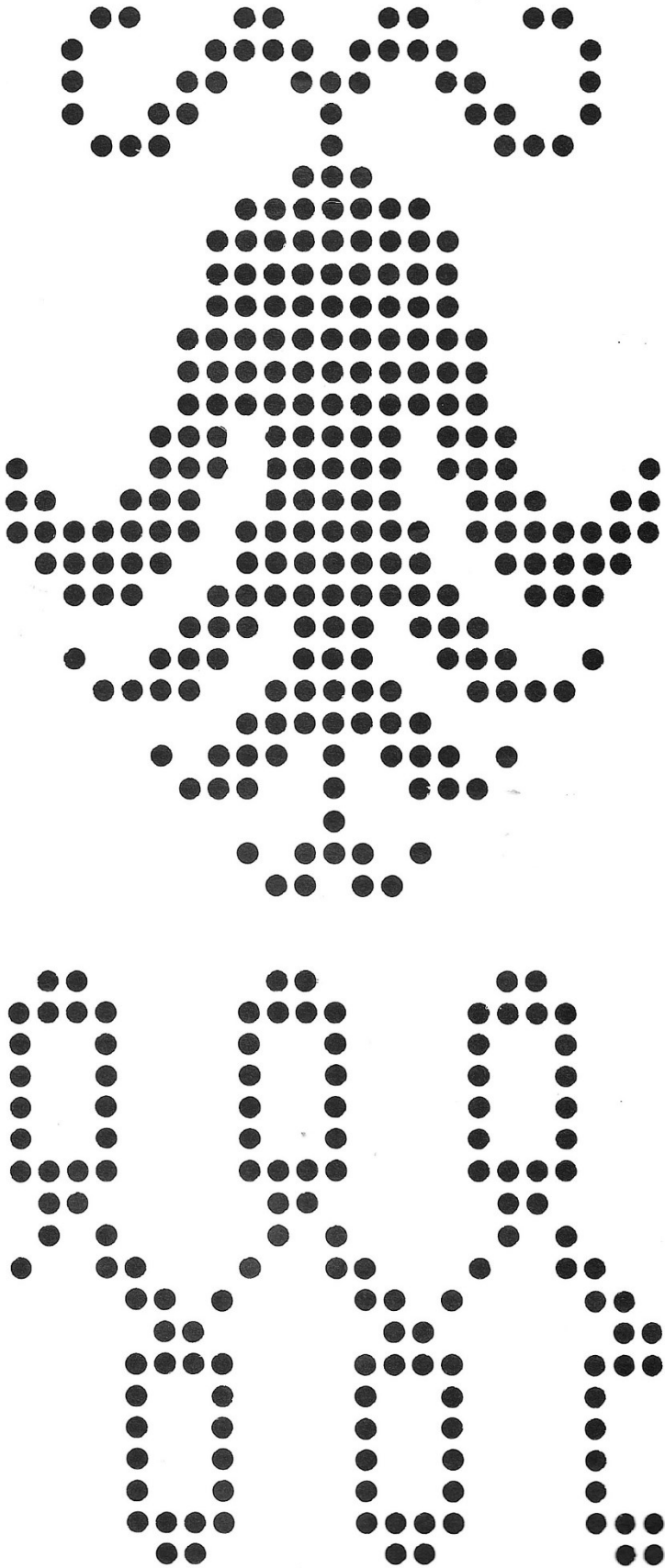
M163 ©



CUT HERE

HANDY PUNCH PATTERN Δ top

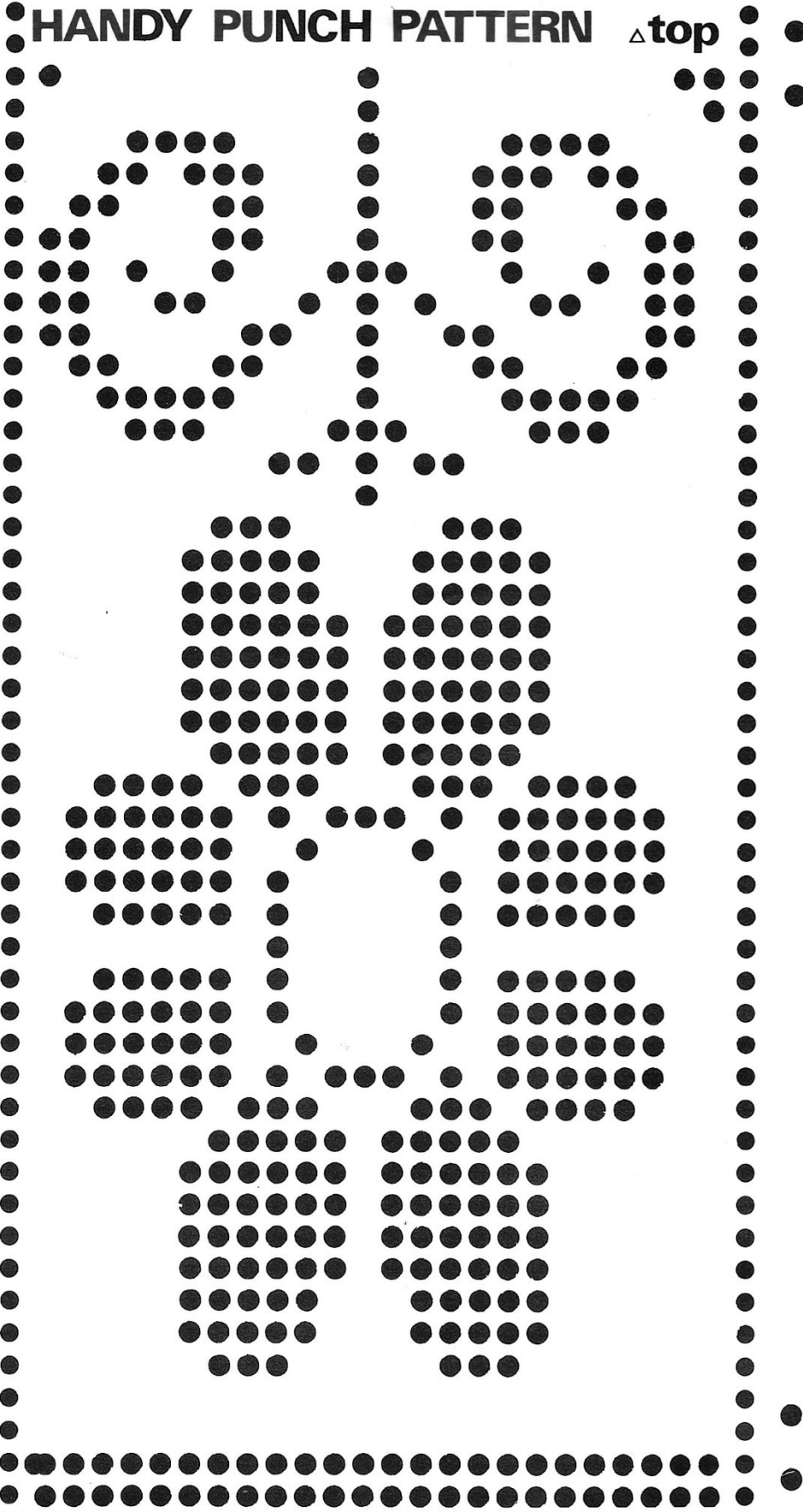
M164 ©



CUT HERE

HANDY PUNCH PATTERN Δ top

M165
©

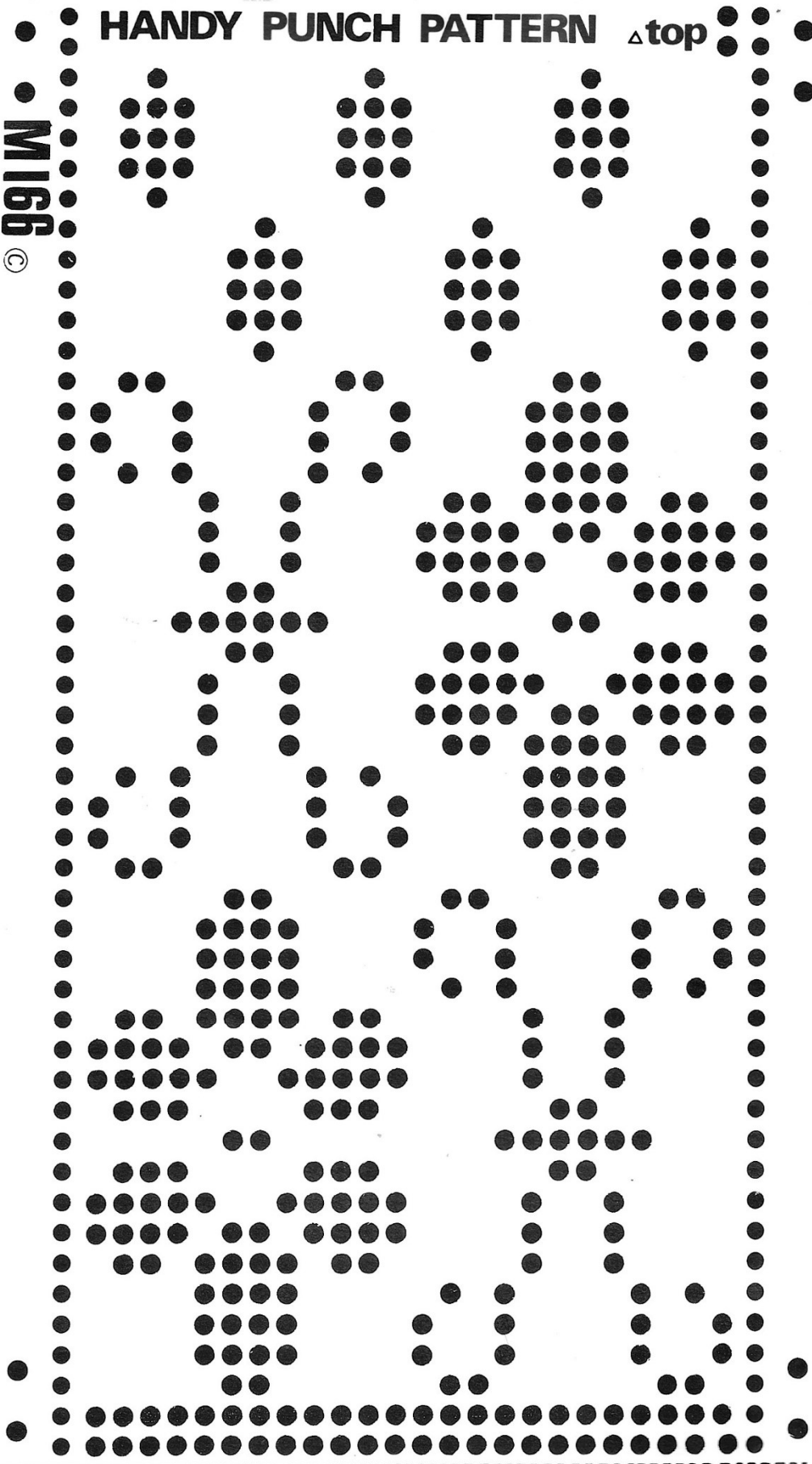


CUT HERE

HANDY PUNCH PATTERN Δ top

MIG6

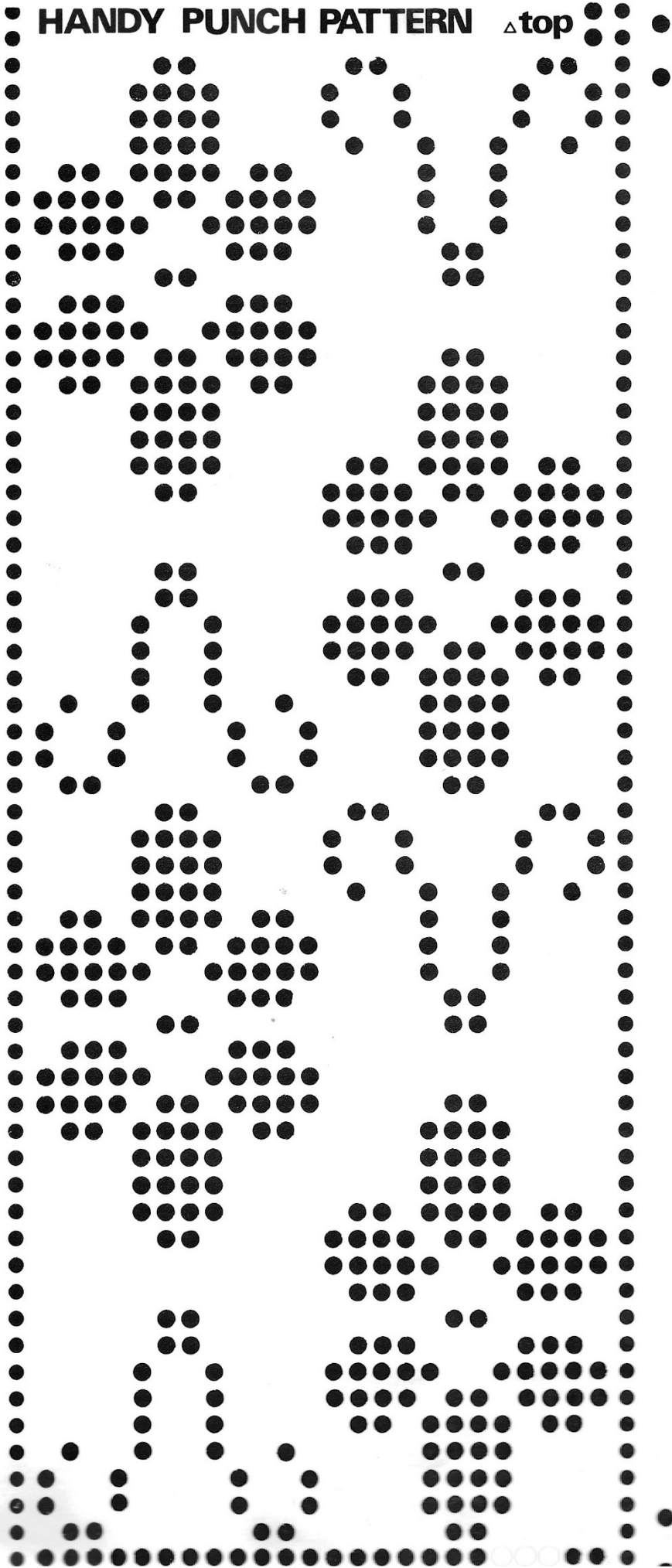
©



CUT HERE

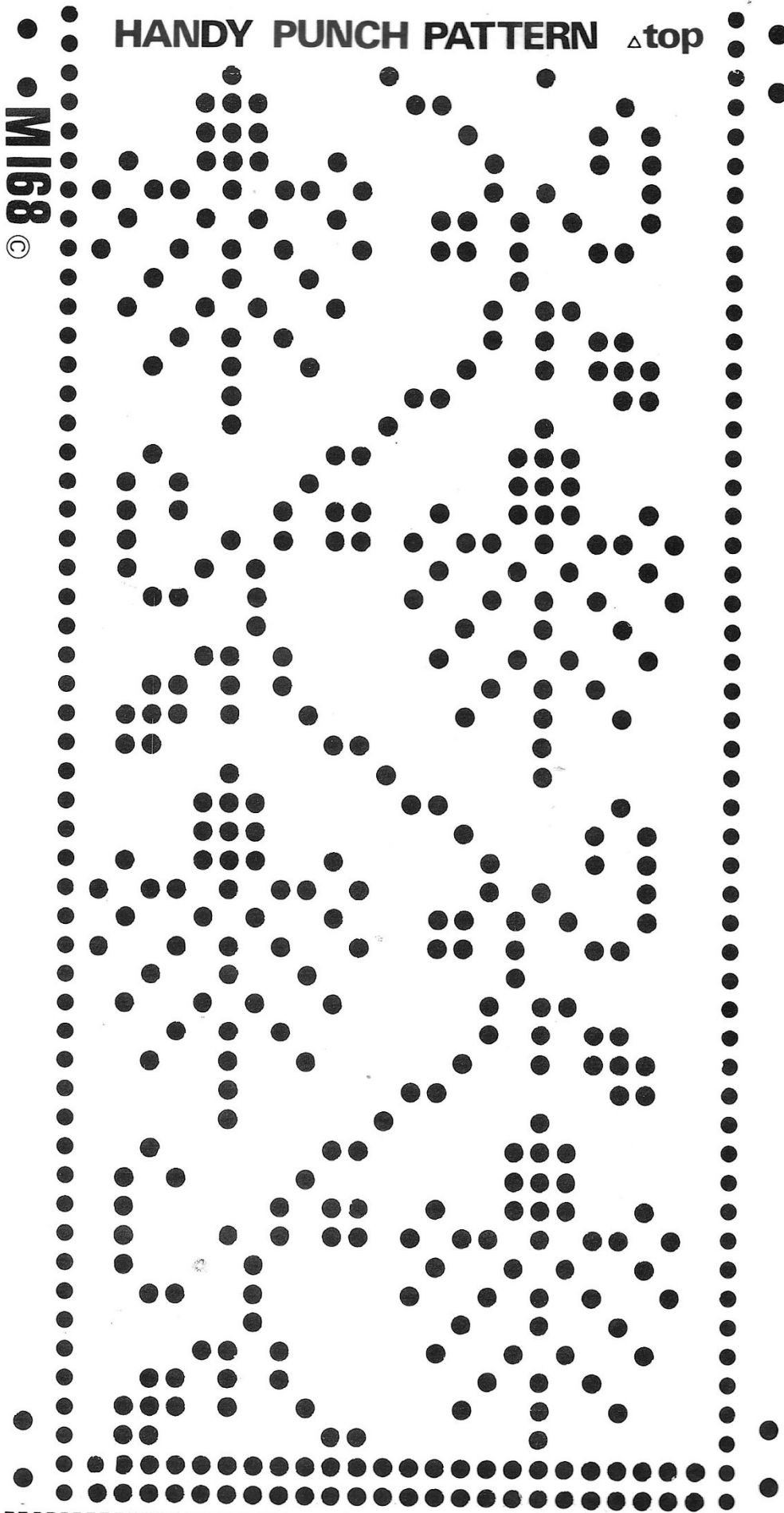
HANDY PUNCH PATTERN Δ top

M167 ©



HANDY PUNCH PATTERN Δ top

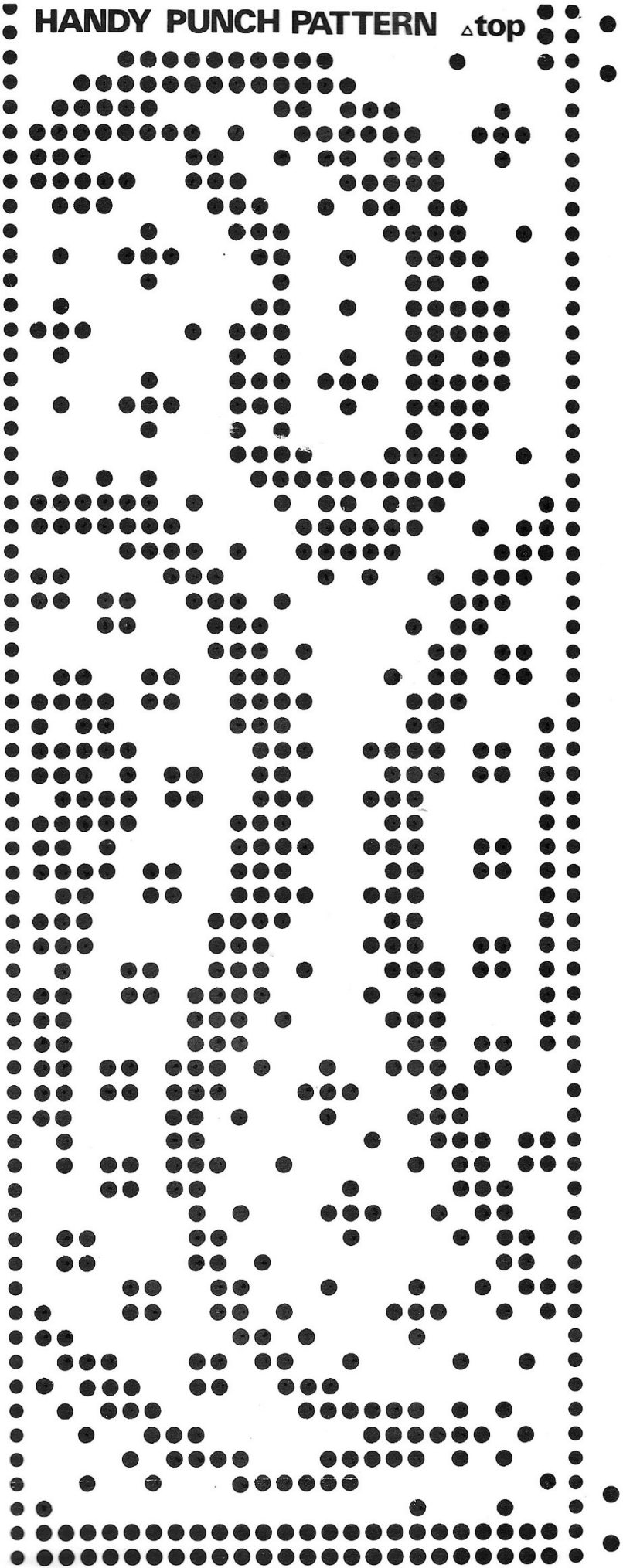
M168
©



CUT HERE

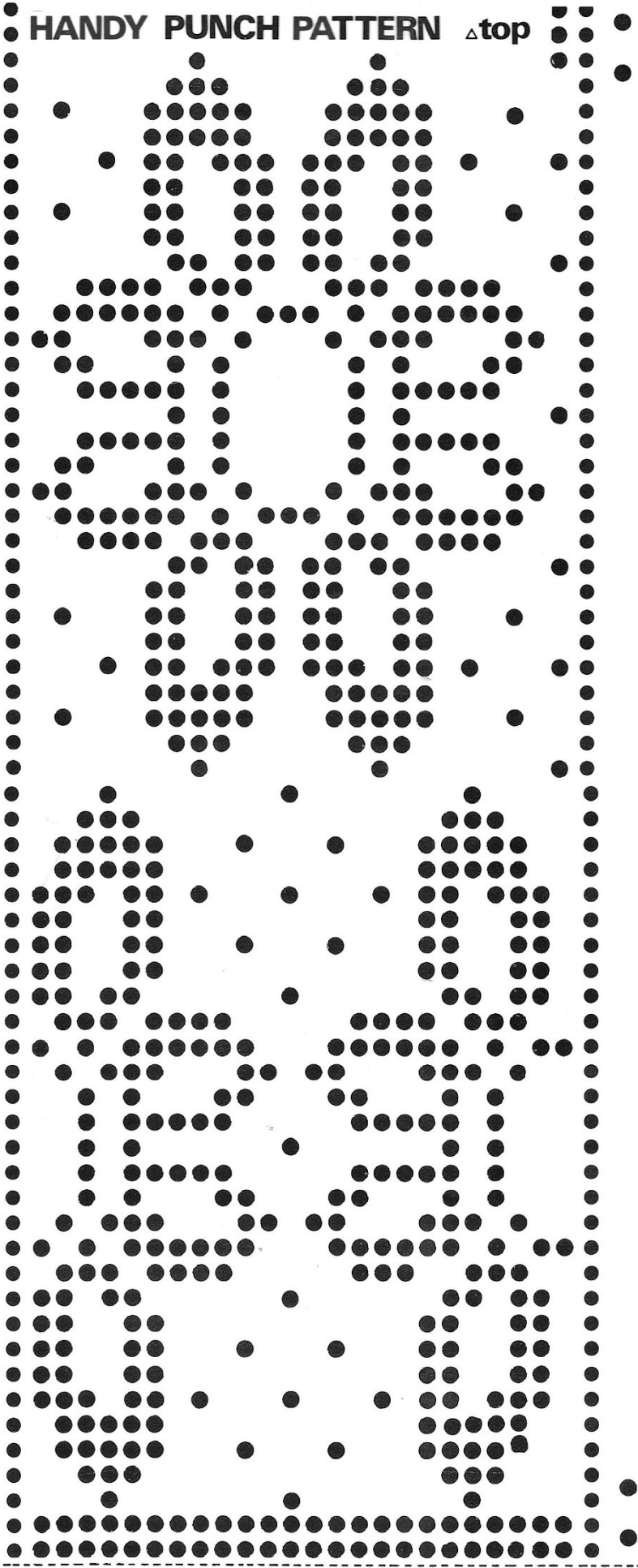
HANDY PUNCH PATTERN Δ top

M169
©



HANDY PUNCH PATTERN Δ top

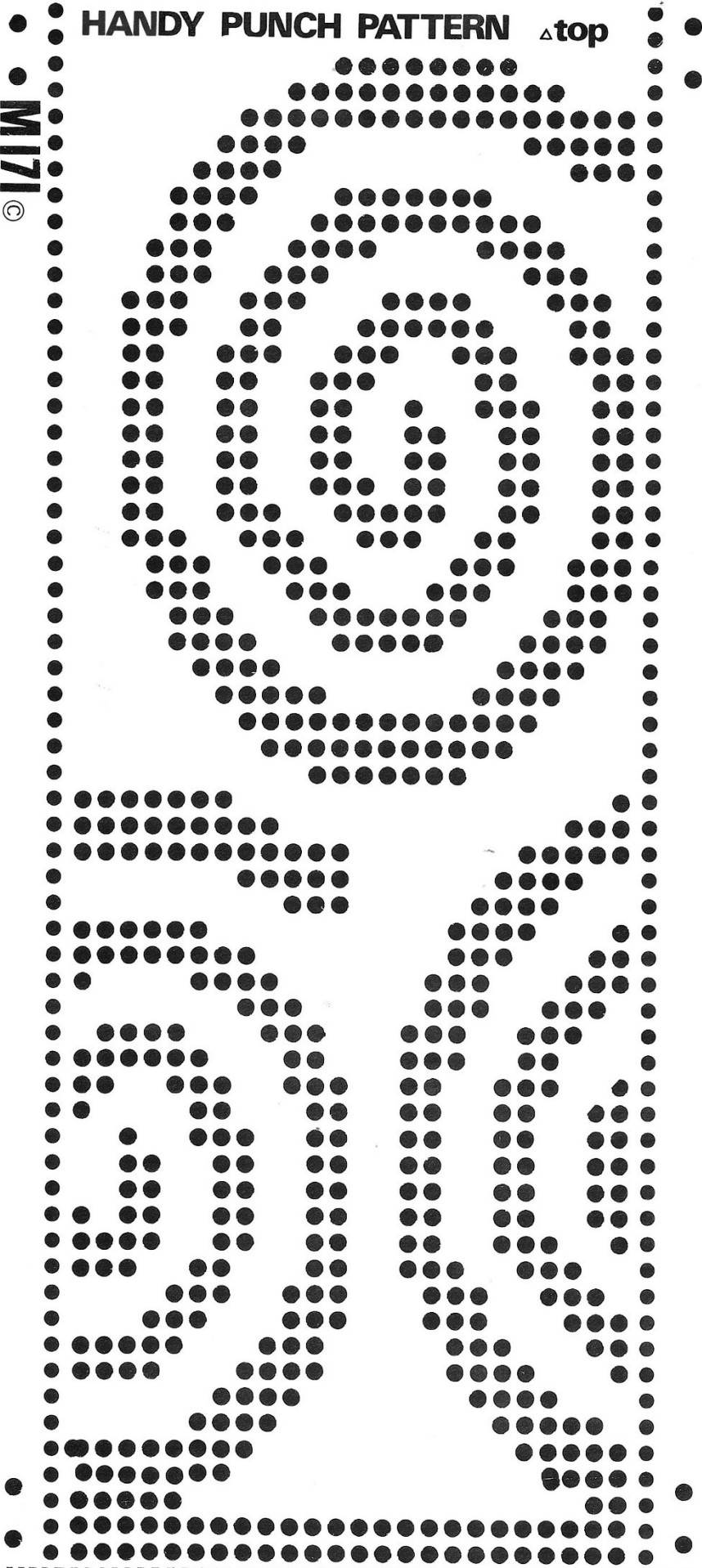
MIZO
©



CUT HERE

HANDY PUNCH PATTERN Δ top

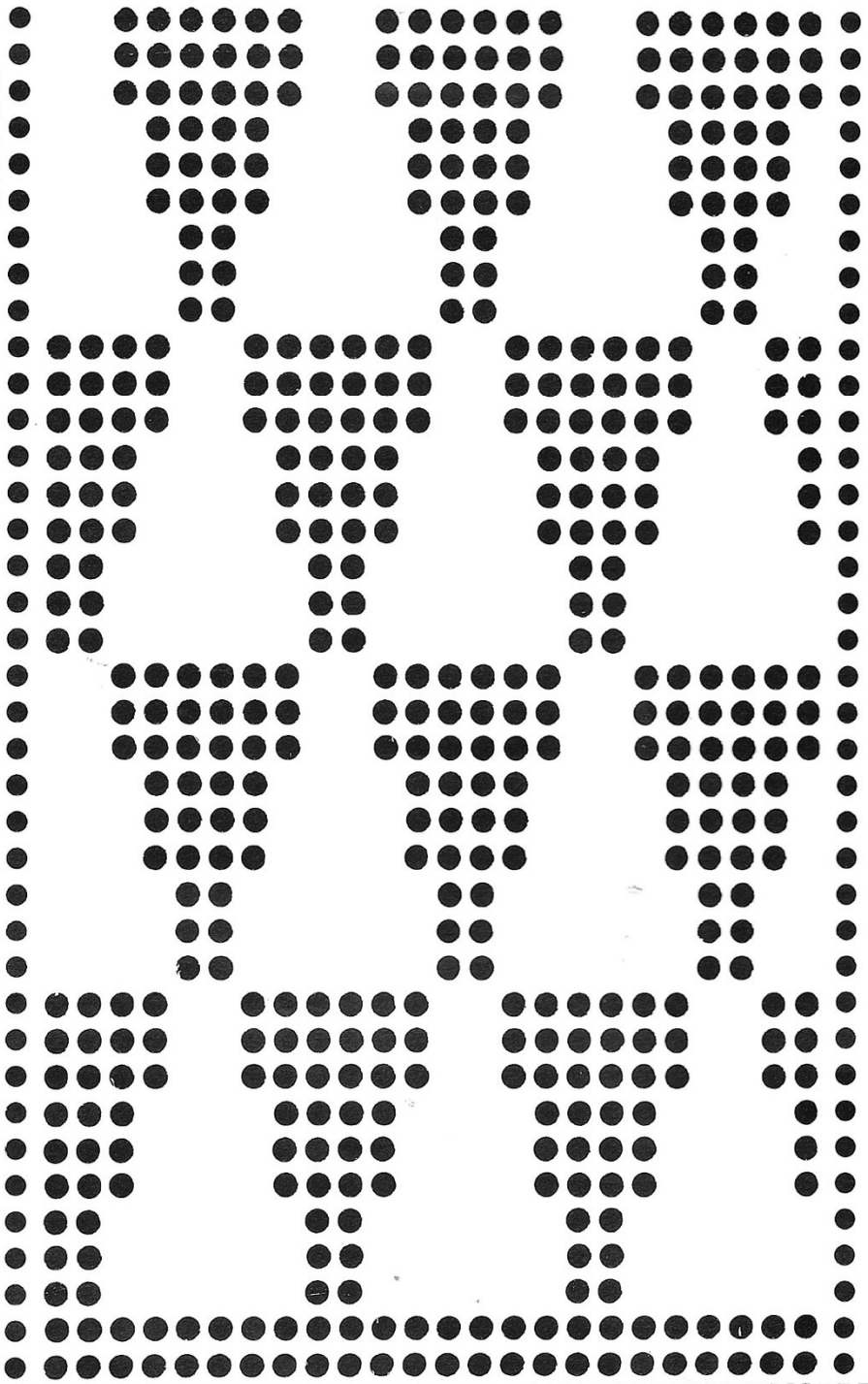
MIZI
©



CUT HERE

HANDY PUNCH PATTERN Δ top

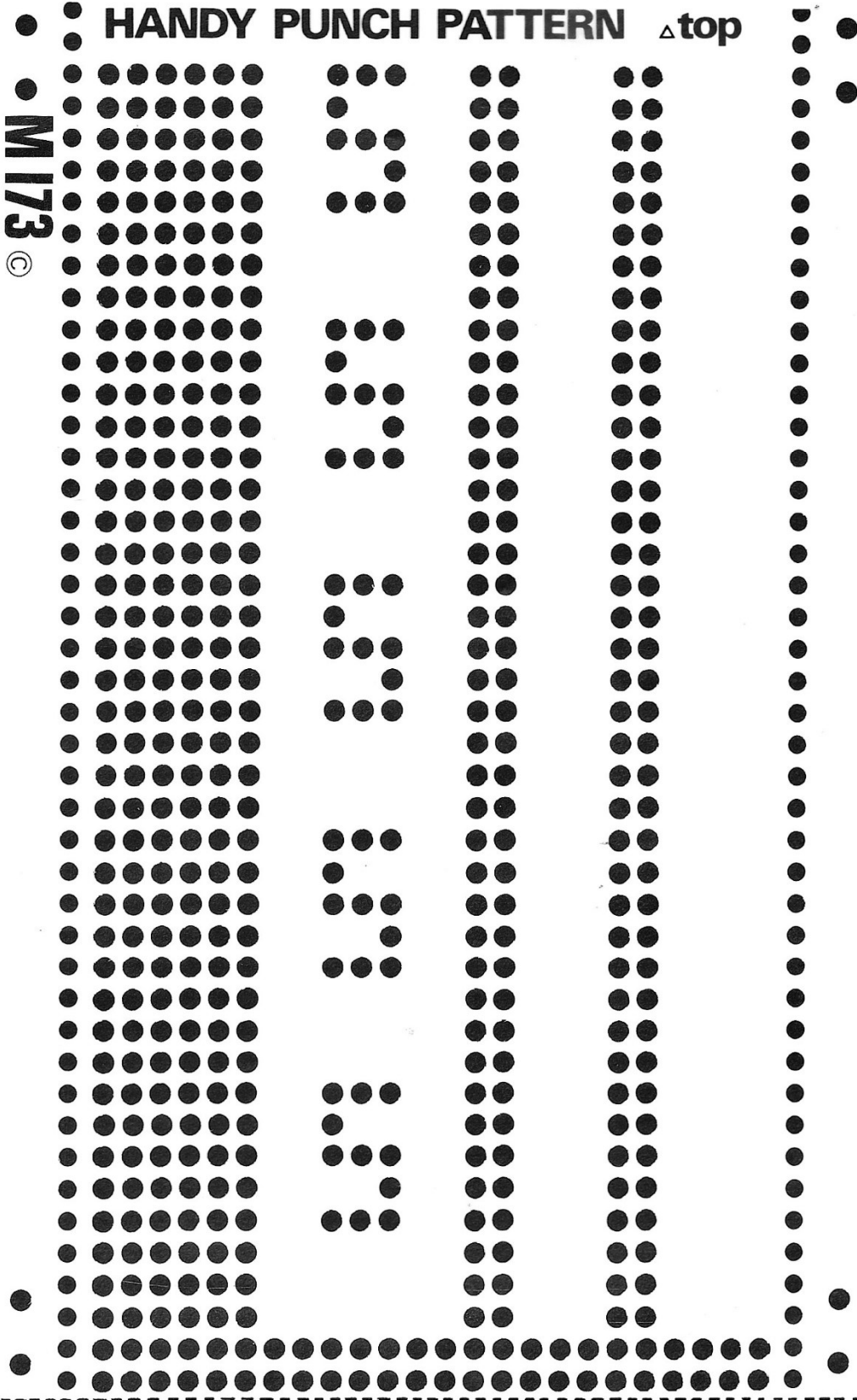
M172
©



CUT HERE

HANDY PUNCH PATTERN Δ top

M173 ©

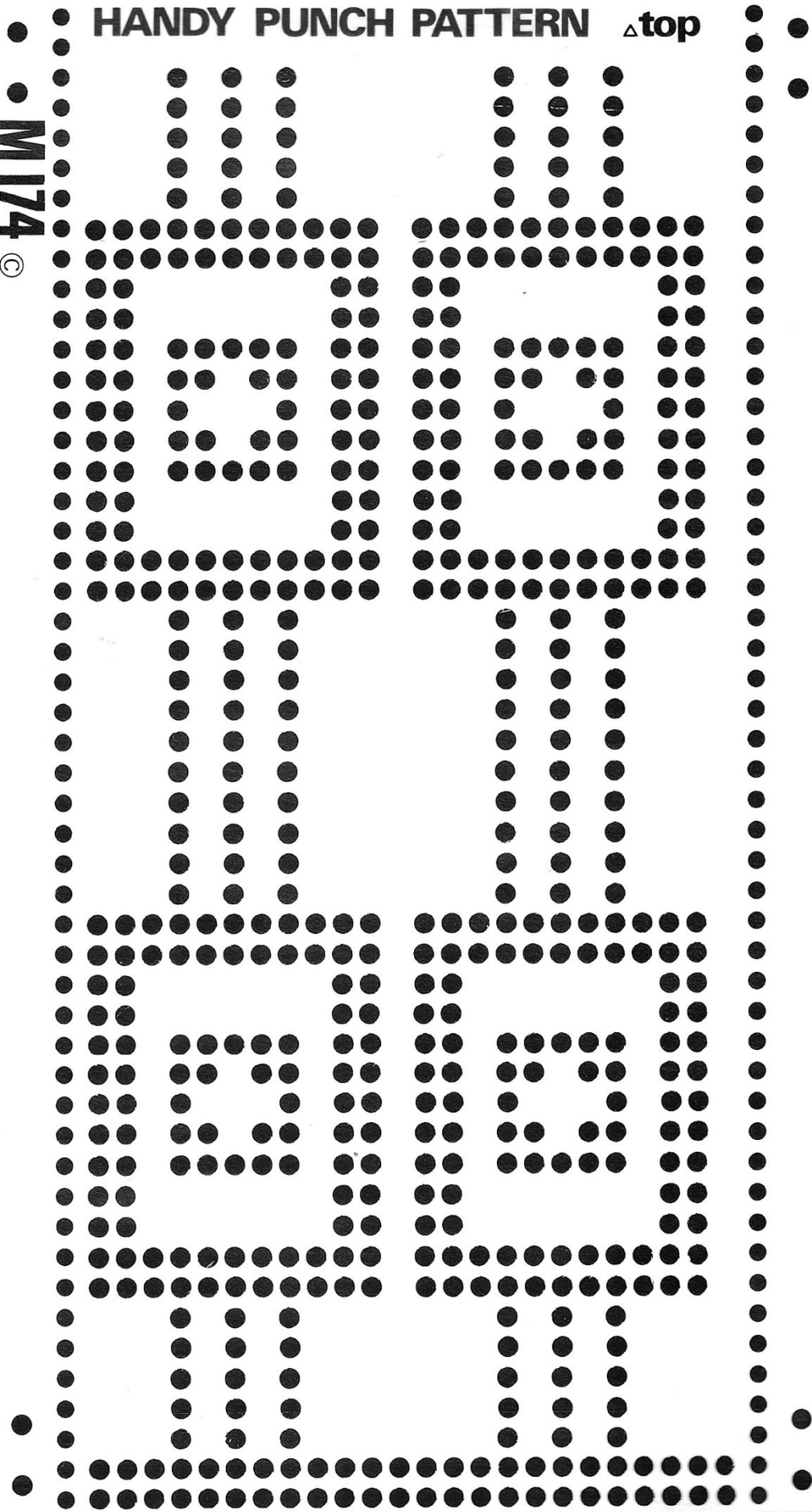


CUT HERE

HANDY PUNCH PATTERN Δ top

M174

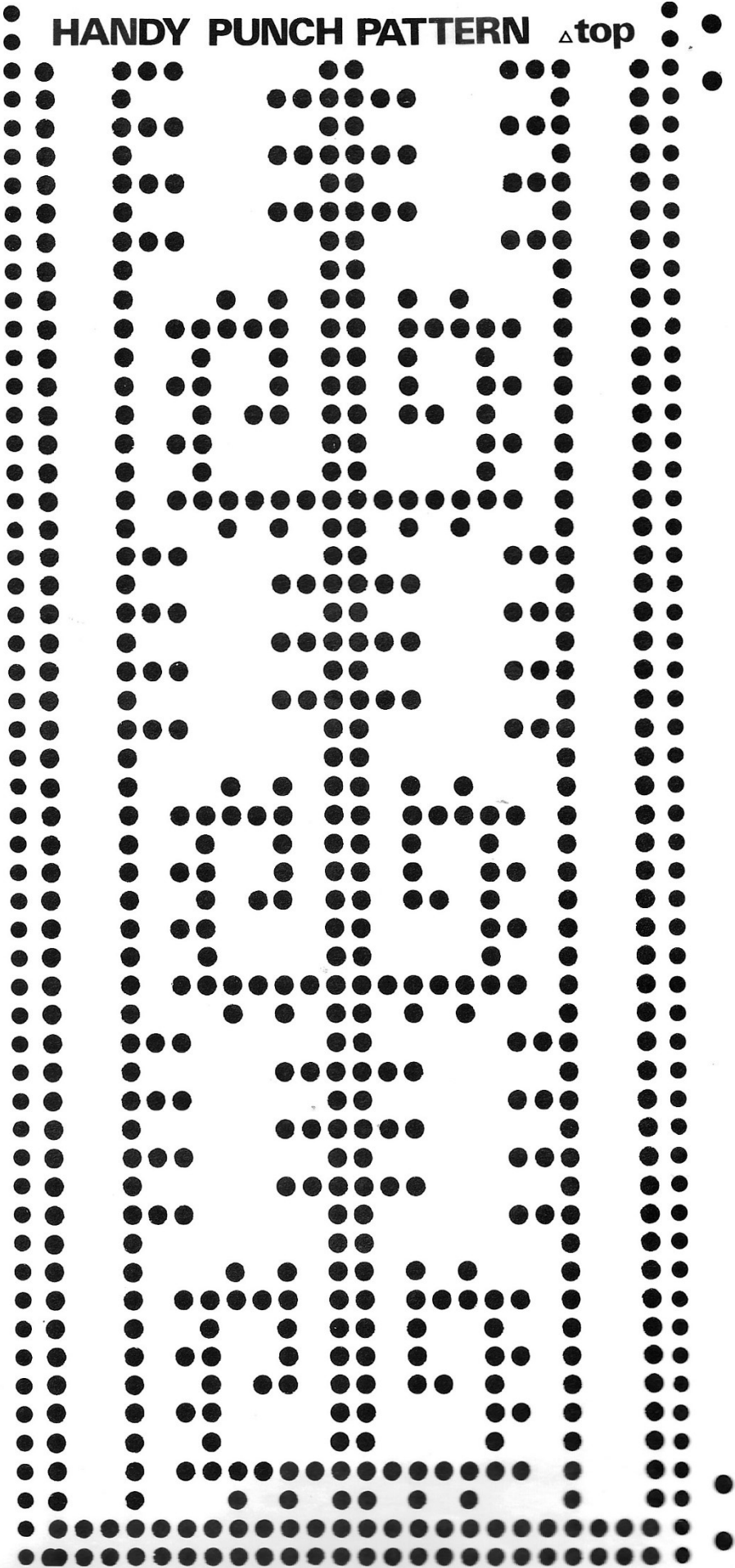
©



CUT HERE

HANDY PUNCH PATTERN Δ top

M 175 ©

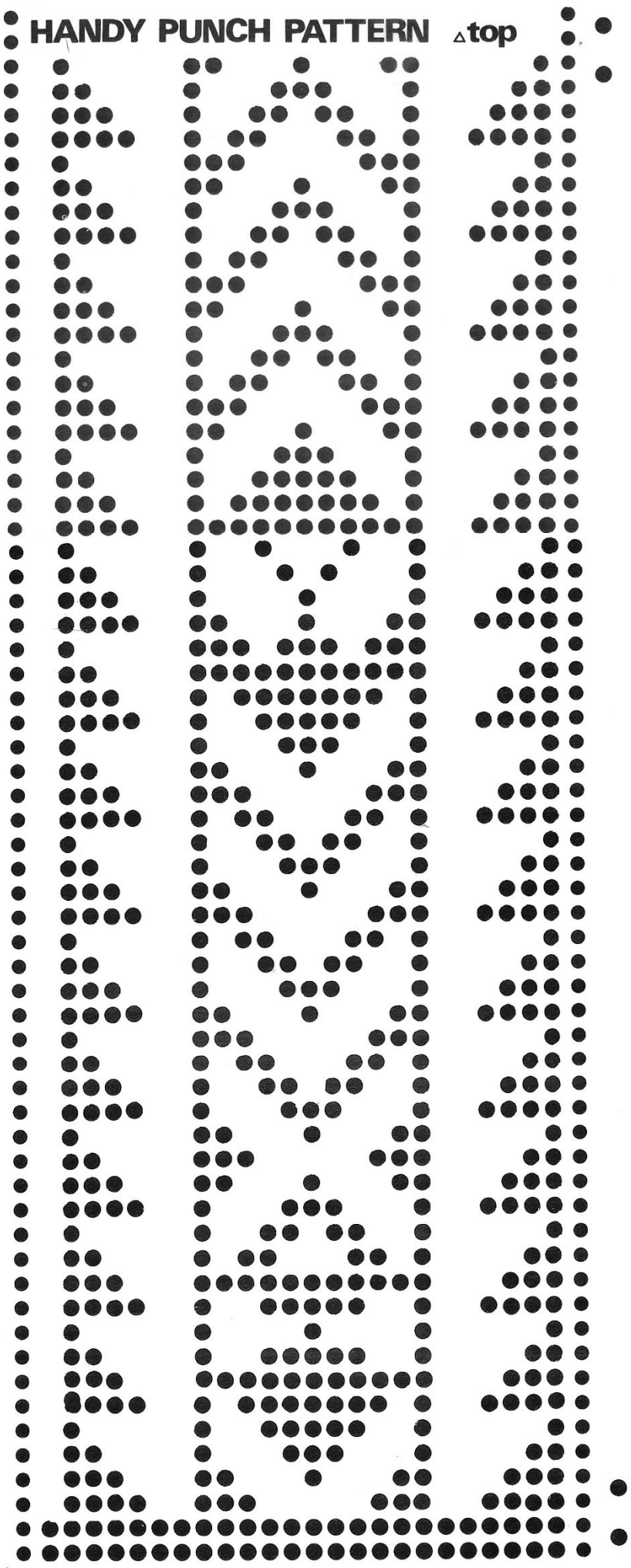


CUT HERE

M176 ©

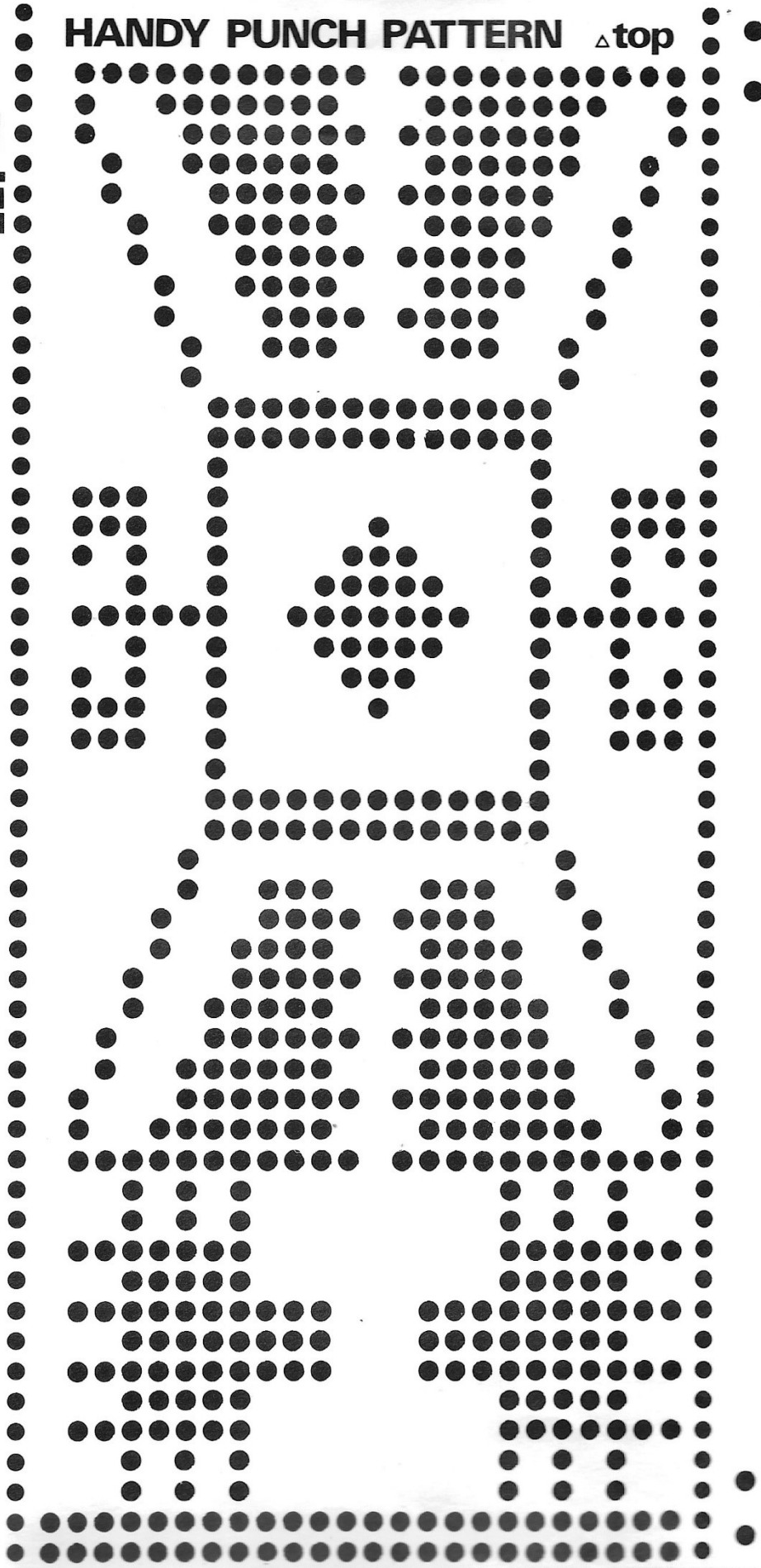
HANDY PUNCH PATTERN

Δ top



HANDY PUNCH PATTERN Δ top

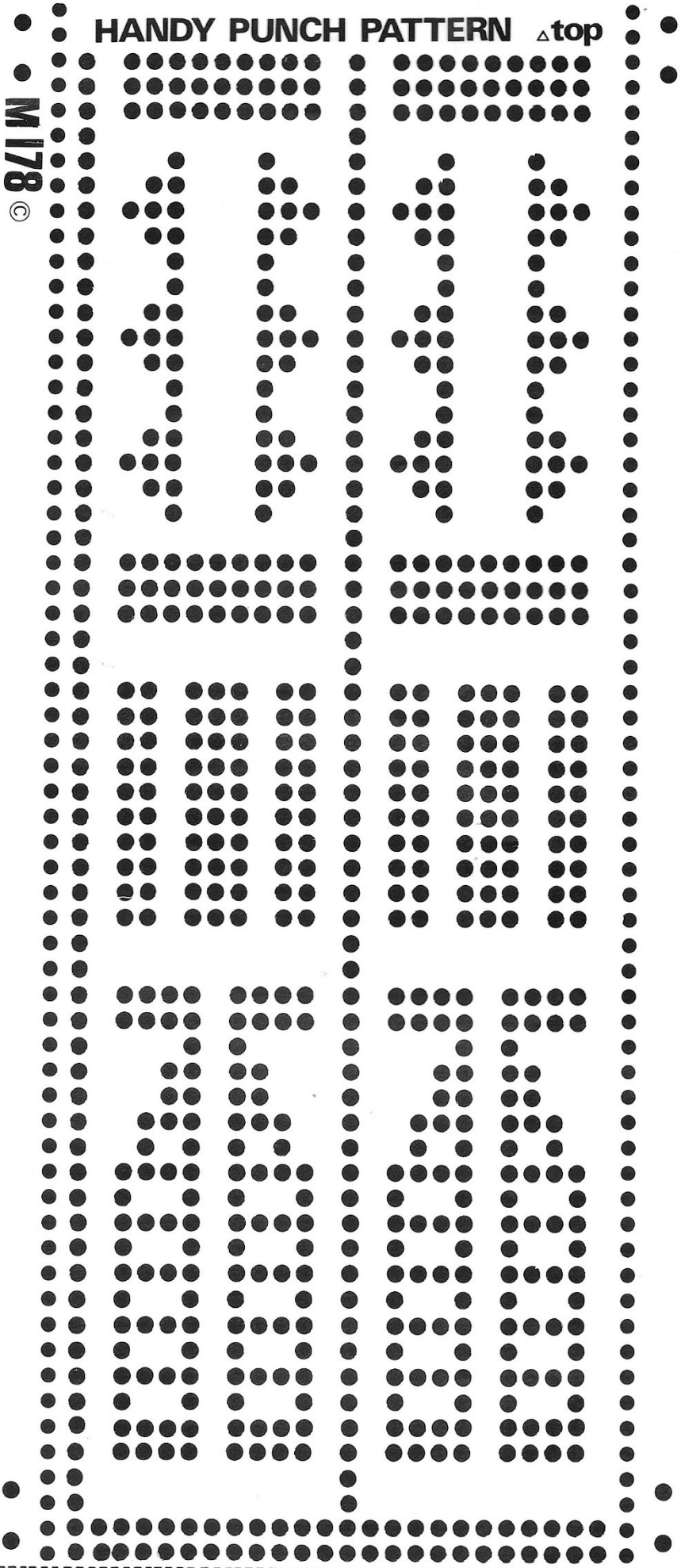
M 177 ©



CUT HERE

HANDY PUNCH PATTERN Δ top

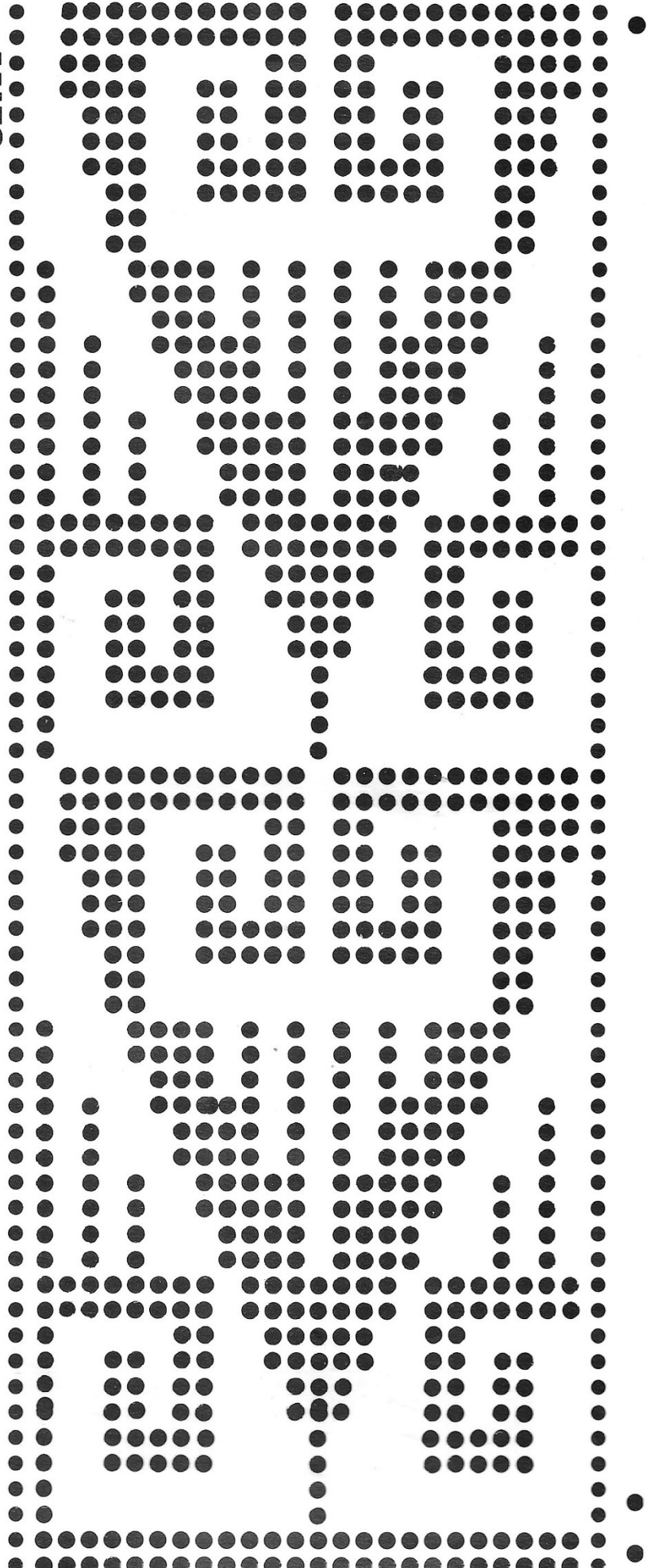
M178
©



CUT HERE

HANDY PUNCH PATTERN Δ top

M179
©



HANDY PUNCH PATTERN Δ top

M180
©

